

# Ube City Disaster Risk Reduction Guidebook

**Check the hazards around where you live! ... Go to page 2**

**When should I evacuate? ..... Go to page 3**

**Heavy rain and typhoons ..... Go to page 4**

**Earthquakes and tsunamis ..... Go to page 8**









**What should I prepare in advance? ..... Go to page 10**

**Where do I get information? ..... Go to page 11**

Disasters can strike anytime, anywhere. Treat protecting your life as a top priority and be prepared for disasters.

## Multilingual Pointing Board

Point at the items on the board to communicate.

<p>① <sup>た</sup>食べられないものがあります</p> <p>① I cannot eat certain food(s). ② 有不能吃的东西 ③ Có một số món tôi không thể ăn được. ④ Ada jenis makanan yang tidak dapat dimakan. ⑤ May mga pagkain akong hindi nakakain.</p> 	<p>② <sup>なが あいだ も</sup>長い間 <sup>びょうき</sup>持っている 病気が あります</p> <p>① I have a chronic illness. ② 您患有慢性疾病吗 ③ Tôi có bệnh mãn tính. ④ Ada penyakit kronis. ⑤ May sakit akong matagal nang dinaramdam.</p> 
<p>③ <sup>からだ ちょうし わる</sup>体の 調子が 悪いです</p> <p>① I am not well. ② 身体不适 ③ Tôi thấy trong người không khỏe. ④ Saya tidak enak badan. ⑤ Hindi maganda ang pakiramdam ko.</p> 	<p>④ <sup>しょうがい</sup>障害が あります</p> <p>① I have a disability. ② 残障人士 ③ Tôi bị khuyết tật. ④ Saya penyandang cacat. ⑤ May kapansanan ako.</p> 
<p>⑤ <sup>けいたいでんわ じゅうでん</sup>携帯電話を 充電したいです</p> <p>① I would like to charge my mobile phone. ② 想给 手机充电 ③ Tôi muốn sạc điện thoại di động. ④ Saya mau mengecharge HP saya. ⑤ Gusto ko sanang i-charge ang aking mobile phone.</p> 	<p>⑥ <sup>つか</sup>Wi-Fi を 使いたいです</p> <p>① I would like to use Wi-Fi. ② 想使用 Wi-Fi ③ Tôi muốn sử dụng mạng Wi-Fi. ④ Saya ingin memakai Wi-fi. ⑤ Gusto ko sanang gumamit ng Wi-Fi.</p> 
<p>⑦ <sup>かぞく れんらく</sup>家族に 連絡したいです</p> <p>① I would like to contact my family. ② 想跟家里人联系 ③ Tôi muốn liên lạc với gia đình. ④ Saya mau menghubungi keluarga saya. ⑤ Gusto ko sanang kontakin ang aking pamilya.</p> 	<p>⑧ <sup>ほ</sup>○○○が 欲しいです</p> <p>① I want ○○○. ② 需要○○○ ③ Tôi muốn/ cần○○○ ④ Saya mau dapat ○○○ ⑤ Gusto ko ng ○○○.</p> 

## Check the hazards around where you live!

# How to check and understand hazard maps

A hazard map is a map that shows areas where disasters are expected to occur and evacuation sites. They are **created separately for each type of disaster**, such as floods, landslides, and storm surges.

Hazard maps for your area can be seen on Ube City's website. You can also see them at the Ube City Disaster Prevention and Crisis Management Division.

Use the hazard maps to check for hazards around your home, school, and workplace.

Decide on safe evacuation routes and destinations.

### Ube City Hazard Map

Check for dangerous areas

For more details, see here ▶



### Ube City Designated Emergency Evacuation Sites

Check the designated emergency evacuation sites

For more details, see here ▶



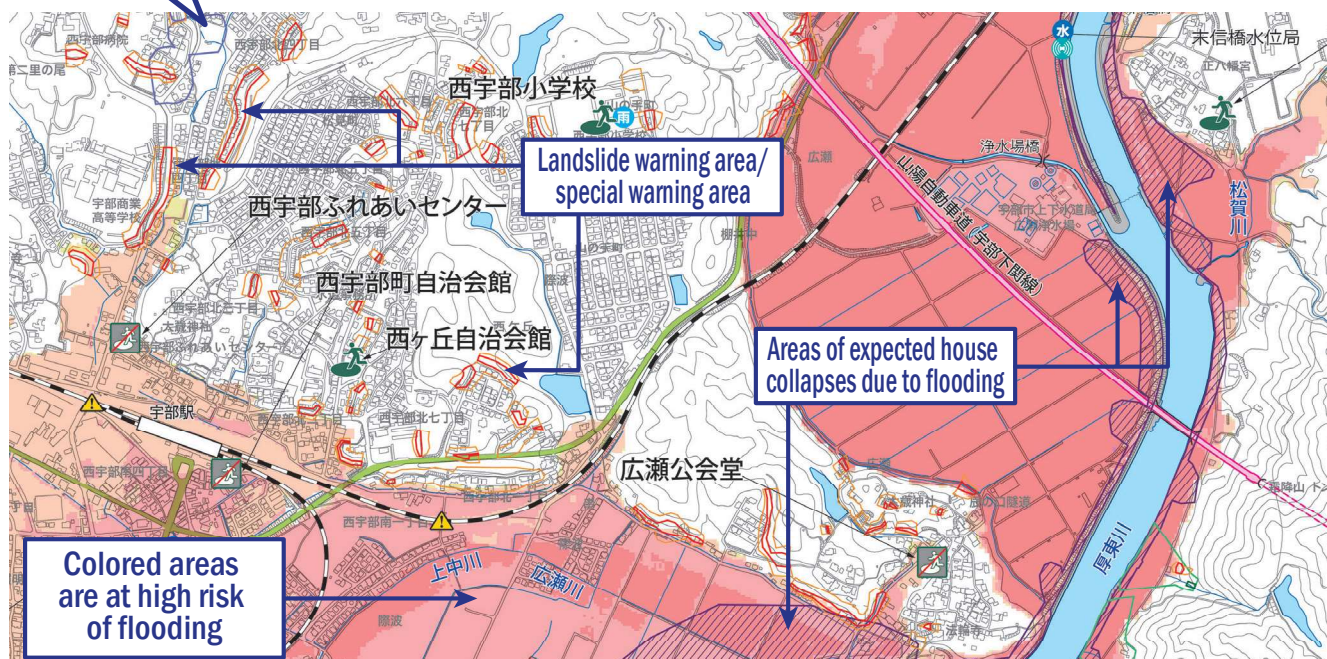
Let's use the Koto River Flood Hazard Map as an example!

**1** Check if your living area, such as your home and workplace, is **colored on the map**.

**2** Refer to the legend on the map to check the expected level of damage.

Check the danger level around your home, etc.

Legend (How to read the map)		
Facility Information	Symbol	Name
		Designated Emergency Evacuation Sites
Map Information		Fire Station
		Police Station
		Water Level Observation Station
		Rainfall Observation Station
		Dam Alert Office
		Drainage Pump Station
		Underpass
		Railway
		Expressway
		Main Road
		City Boundary
		Water Surface
<b>Flood Prediction Map</b> <b>Flood depth and situation</b> 		
<b>Evacuation Actions</b> <b>Early evacuation is required</b> <ul style="list-style-type: none"> <li>● Evacuate to a place that will not flood</li> <li>● If flooding has already begun, evacuate to a nearby safe place</li> <li>● In principle, evacuate to a place that will not flood</li> <li>● If the surrounding area is dangerous, wait in a safe place indoors</li> </ul>		
<b>Areas of Expected House Collapses Due to Flooding</b> Areas where there is a risk of severe flood flows and riverbank erosion that can cause houses to collapse or wash away during a flood. <b>Early evacuation is required.</b>		
<b>Landslide Warning Areas/Special Warning Areas</b> Collapse of steep slopes (cliffs collapse) Special Warning Area (Red Zone) Warning Area (Yellow Zone) Debris flow Special Warning Area (Red Zone) Warning Area (Yellow Zone) Landslide		



## When should I evacuate?

The timing of evacuation varies depending on the type of disaster.



### Earthquake

Earthquake Early Warning  
(emergency alert e-mail)

Wait in a safe place until  
the shaking stops

Once the shaking stops, evacuate calmly



### Tsunami



When an earthquake occurs

If you are near the sea or a river,  
evacuate to higher ground  
immediately, even if no tsunami  
warning has been issued



### Flood



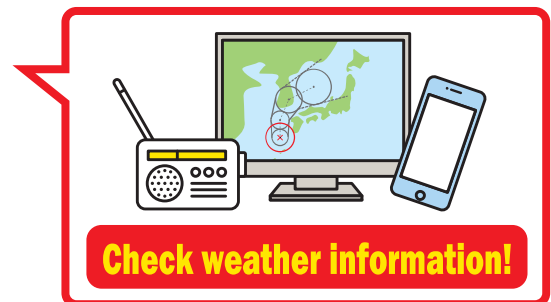
### Landslide



### Storm Surge

**Evacuate from dangerous  
areas when evacuation  
information is issued!**

When heavy rain or a typhoon is expected, check  
the weather conditions on TV and the internet.



#### Alert Levels

#### Evacuation Information

#### Actions to Take

**5**

Disaster  
Occurrence  
or Impending

**Emergency Safety  
Measures**  
(Issued by city)

**Do whatever you can to  
protect your life**

If you have not evacuated, move to a safe  
place in your home (e.g., 2nd floor)

**Must evacuate from dangerous areas by Alert Level 4**

**4**

High Risk of  
Disaster

**Evacuation  
Instruction**  
(Issued by city)

**Evacuate**  
to a safe place immediately

**3**

Risk of  
Disaster

**Evacuation of  
the Elderly,  
etc.**  
(Issued by city)

People who need extra time to evacuate

**e.g., the elderly**  
and their supporters  
should start evacuating



# Floods

Floods occur when river water levels rise abnormally due to heavy rain, etc., causing riverbanks to break or water overflow.



Check if the area you live in will flood if rivers overflow

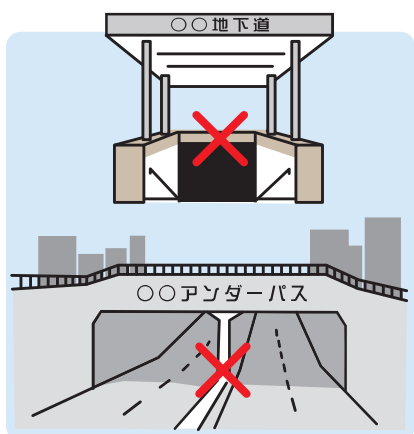


When it starts raining, pay attention to weather and evacuation information and be ready to evacuate at any time



If you are in an **area of expected house collapses due to flooding\***, leave the area

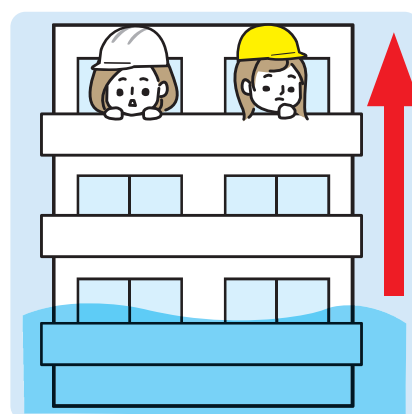
\*Note: Areas where there is a risk of houses collapsing or washing away during a flood



Do not use underground passages or underpasses



Do not go near rivers or gutters

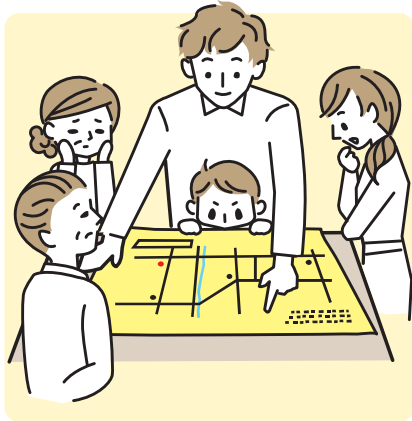


It is dangerous to evacuate at night or after flooding. Instead, escape to the upper floors of a building



# Landslides

Triggered by heavy rain, earthquakes, etc., landslides occur when mountain slopes and cliffs collapse or when mud from mountains and riverbeds mixes with rainwater and flows downwards, crushing buildings.



Check if your living area is in a **landslide warning area**\*

\*Note: Areas at risk of landslides



When it starts raining, pay attention to weather and evacuation information and be ready to evacuate at any time



People in or around **landslide warning areas** should evacuate to a safe place as early as possible



If evacuation information is issued while you are in a **landslide warning area** or nearby, evacuate immediately



If it is dangerous to go outside, evacuate to a higher room as far away from mountainsides (slopes) as possible



## Signs of an impending landslide

### Landslides

- Well water becomes cloudy
- The ground cracks and becomes uneven

### Debris flow

- River water becomes muddy, and trees fall into the water and flow along with it
- River water decreases even though it is still raining

### Cliffs collapse

- Water suddenly starts gushing from a cliff
- Small stones fall from a cliff



# Storm Surge

A storm surge is a phenomenon where the sea level rises abnormally due to a typhoon, etc.

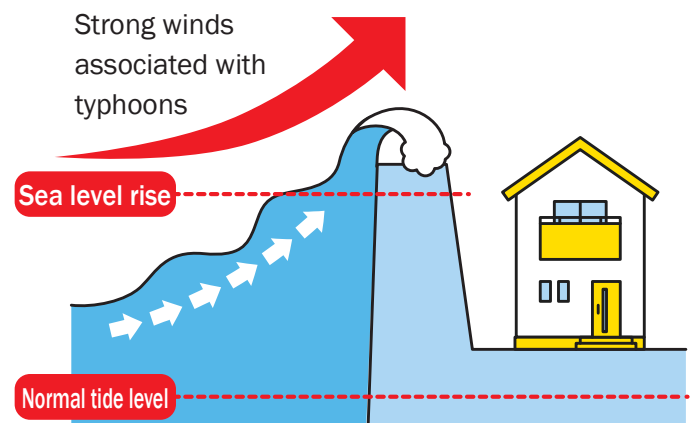
## Storm surges have caused the largest natural disasters in Ube's history!

In Ube City, severe damage has been caused by storm surges associated with typhoons, such as the Suo-nada Typhoon in 1942 and Typhoon No. 18 in 1999.

### Storm Surge Mechanisms

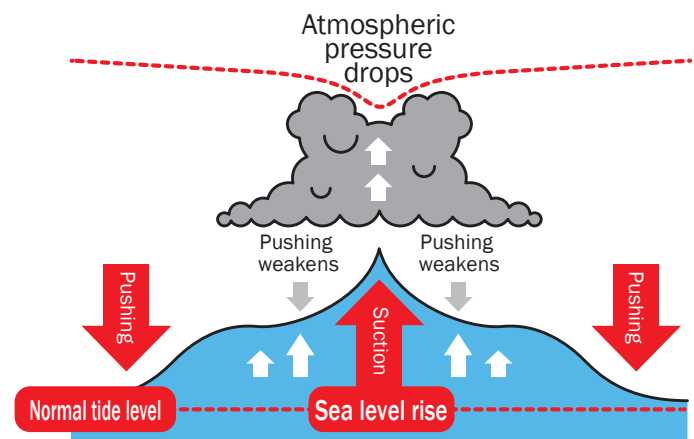
#### Wind Push Effect

Strong winds sweep the surface of the sea, creating waves. The water level rises above the land.



#### Suction Effect

The atmospheric pressure in the center of the typhoon is lower than the surroundings, so the air around the typhoon pushes down on the seawater, and the air near the center sucks up the seawater. As a result, the sea level near the typhoon's center rises.

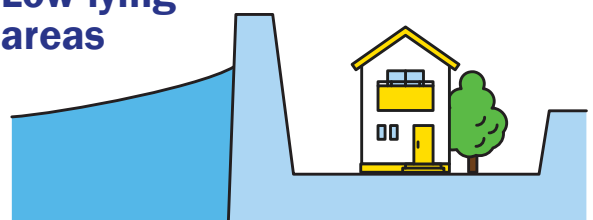


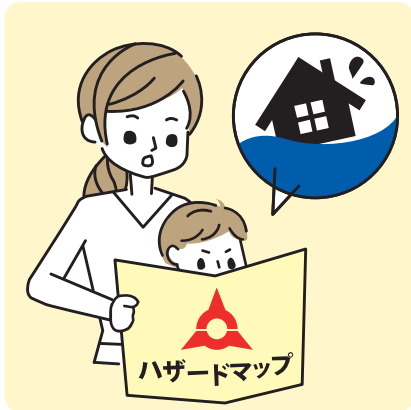
### Areas prone to storm surge damage

#### Around river mouths



#### Low-lying areas





Check if the area in which you live might flood due to a storm surge



When a typhoon occurs, keep up to date on the weather



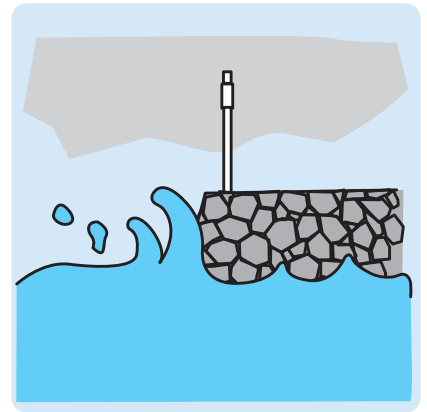
Do not go out when a typhoon is approaching



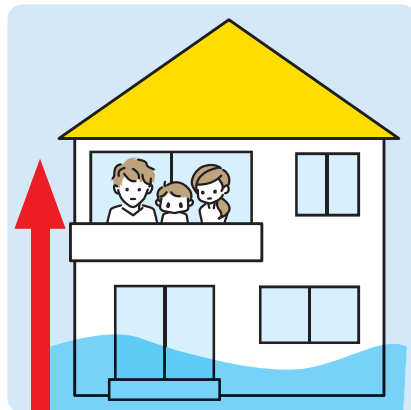
Before strong winds and rain start, bring potted plants, laundry poles, and other objects that might be blown away indoors



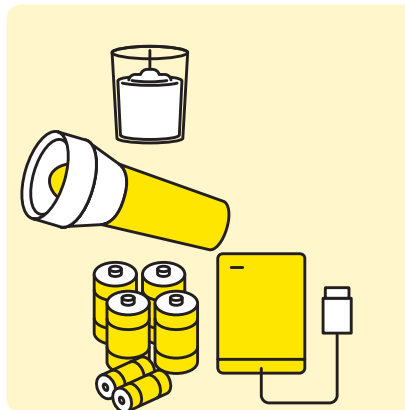
Evacuate before the wind and rain become strong



Do not approach the sea or rivers



If it is too late to evacuate, move to the upper floors of buildings



Prepare for power outages

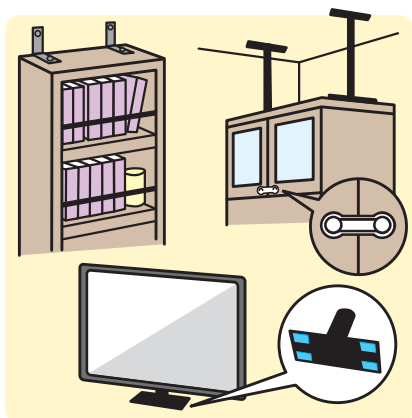
**Prepare!**

- ☐ Flashlights
- ☐ Batteries
- ☐ Portable powerbank
- ☐ Other items your household requires



# Earthquakes

Earthquakes occur suddenly. When you receive an earthquake early warning or feel strong shaking, protect your head from falling objects. When the shaking stops, check your surroundings for safety and secure an exit.



Anchor furniture and appliances in place so they do not move  
Install drop-prevention and anti-tipping devices



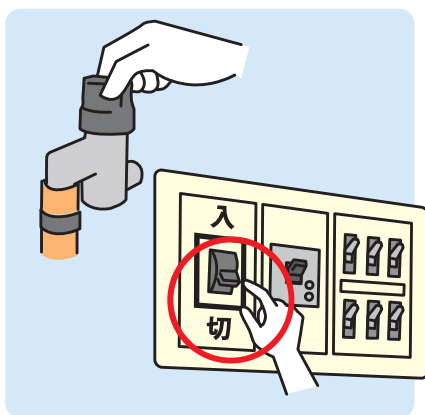
Get low to the ground, protect your head, and do not move until the shaking stops



Open doors to secure evacuation routes



If a fire breaks out, perform initial fire extinguishing



Before evacuating from your house, extinguish sources of flame, close gas valves, and turn off the electricity breaker



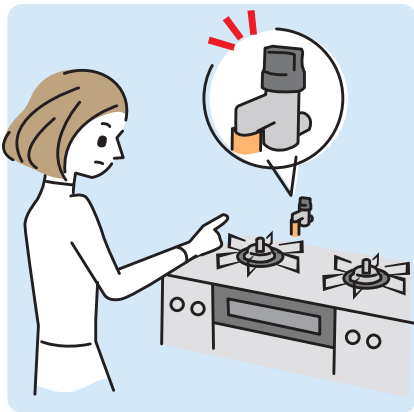
Always wear shoes when evacuating (do not wear sandals or other similar footwear)



# Tsunami

Earthquakes can cause tsunamis.

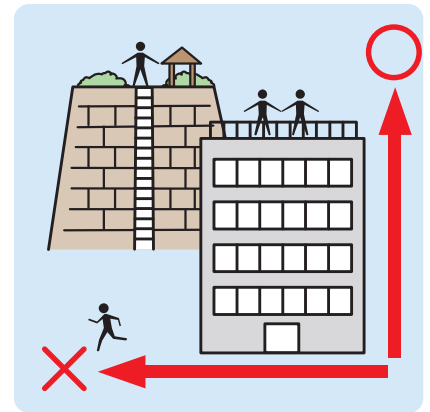
If a tsunami occurs, evacuate to higher ground or a designated emergency evacuation site immediately, even if the shaking in your area was minor.



Calmly extinguish sources of flame and close gas valves



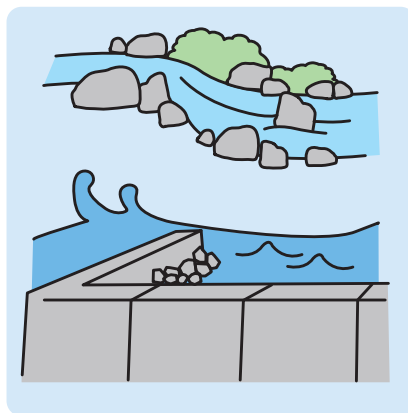
If a tsunami advisory or warning is issued, evacuate to higher ground immediately



Evacuate **on foot** to even slightly higher places rather than distant places



Travel **on foot** as a rule



Never approach the sea or rivers



Do not return until the tsunami advisory or warning is lifted

# Emergency Supplies



Emergency supplies are the bare minimum you will need when evacuating. Each person needs to think about and prepare what they will need. Store these items in a backpack, near an entrance, or in bedrooms so that they can be grabbed quickly.

**MEMO**  
(Write down what you think you need)

**Water**

**Flashlights**

**Passports/  
Residence cards**

**Food**  
(that can be eaten without heating)

**Sanitary items**  
(tissues, disinfectant, masks, etc.)

**Insurance cards,  
medication for chronic  
illnesses, regular medicines**

**Diapers, sanitary  
products, etc.**

**Cold-weather gear**  
(blankets, etc.)

**Spare batteries  
for cell phones**

# Items to stock up on at home

Since each household has different needs, consider and prepare the items you will require, along with emergency supplies.

**MEMO**  
(Write down what you think you need)

**Water**

**Food**  
(retort pouches, canned food, instant noodles, etc.)

**Batteries**

**Food wrap**

**Helmets**

**Work gloves**

**Portable toilets**

**Trash bags/large  
plastic bags**

**Portable stove/  
gas cylinders**

**Hint**

**Important Items**

Keep paper certificates, inkan seals, important photos, etc., in a zippered plastic bag to make them waterproof.

**People who cannot evacuate alone should use the disaster evacuation support system during disasters**

The Ube City Disaster Evacuation Support System was created to assist the elderly, people with disabilities, and others requiring support during disasters.

Contact: Community Welfare Division (TEL.0836-34-8325 FAX.0836-22-6026)



## Issued by Ube City



### Ube City Website

宇部市

検索



### Ube City Disaster Prevention E-mail (Ube Mail Service)

Provides disaster risk reduction information such as evacuation instructions and warnings issued to Ube City via e-mail.



#### How to Register

Send an e-mail to the registration/change of e-mail address, and follow the instructions in the e-mail that will be sent to you.  
Registration/Change of E-mail Address: ube@xpressmail.jp



### Emergency Alert E-mail (Area Mail)

Provides evacuation instructions, earthquake early warnings, missile information, etc., to cell phones and smartphones via your cell phone carrier. (No prior registration required)



### Ube City Official LINE Account

Provides disaster prevention information, such as evacuation instructions via LINE.



### Facebook

Account name: Ube City Disaster Prevention and Crisis Management Division

Ube City (provides information in Easy Japanese)



### X (Formerly Twitter)

Account name: @ube\_bousai (Ube City Disaster Prevention and Crisis Management Division)



### Instagram

Account name: @international.ube



## Outdoor Disaster Risk Reduction Speakers (Japanese language only)

## From the Mass Media and Internet

### NHK World JAPAN “Multilingual Portal: Japan LIFE & BOSAI” (Disaster and Living Information in Foreign Languages)



### Japan Tourism Agency’s Disaster Information App for Foreign Tourists “Safety tips”

iPhone



Android



### web171 Internet Disaster Message Board



An internet bulletin board for confirming the safety of people in disaster areas. It is available in Japanese, English, Chinese, and Korean.

### Immigration Services Agency of Japan “Daily Life Support Portal for Foreign Nationals”



### Japan Meteorological Agency Multilingual Website



### Television

Press the d-button on your remote to display disaster information.



### Ube City General Consultation Service for Foreigners

Consultations are available in 20 languages, including Easy Japanese.

**0836-34-8136** (Weekdays 8:30-17:15)

If you have trouble communicating ...

### Voice Tra® Multilingual Speech Translation App

iPhone



Android



An app that listens to and translates voices into 31 languages (including dialects) such as English, Chinese, and Vietnamese.

# Disaster Memos

Disasters do not always occur when families are together.  
Fill out this memo, make copies, or have each person in your household photograph it with their cell phone and save it.

I live in \_\_\_\_\_ area.

\_\_\_\_\_ Community Center's phone number: \_\_\_\_\_

## Evacuation Sites and Meeting Points

Disaster Type	Evacuation Site (1st Choice):	Evacuation Site (2nd Choice):	Meeting Point/Contact Method (if you cannot meet at the evacuation site):
Floods			
Landslides			
Storm Surge			
Earthquakes			
Tsunami			

## Contact Information for Family and Relatives or Acquaintances Who Can Provide Support

Name:	Blood Type:	Phone Number:	E-mail Address:	Memos:

Even if it is difficult to contact each other within the disaster area (due to localized network congestion, etc.), it may be easier outside the disaster area. It can also be effective to determine the contact information of relatives or acquaintances in advance who live far away and have them relay messages in emergencies.

**Fire/Rescue** 1 1 9  
**Police** 1 1 0



<Issued by> Ube City Tourism Exchange Division

<Supervised by> Ube City Disaster Prevention and Crisis Management Division

1-7-1 Tokiwacho, Ube City, Yamaguchi Prefecture 755-8601 Japan

Tel: 0836-34-8136 Fax: 0836-22-6083 Email: kokusai@city.ube.yamaguchi.jp

<Available Languages> Easy Japanese, English, Chinese, Vietnamese, Tagalog, Indonesian

Note: This guidebook was funded by grants from the Council of Local Authorities for International Relations.