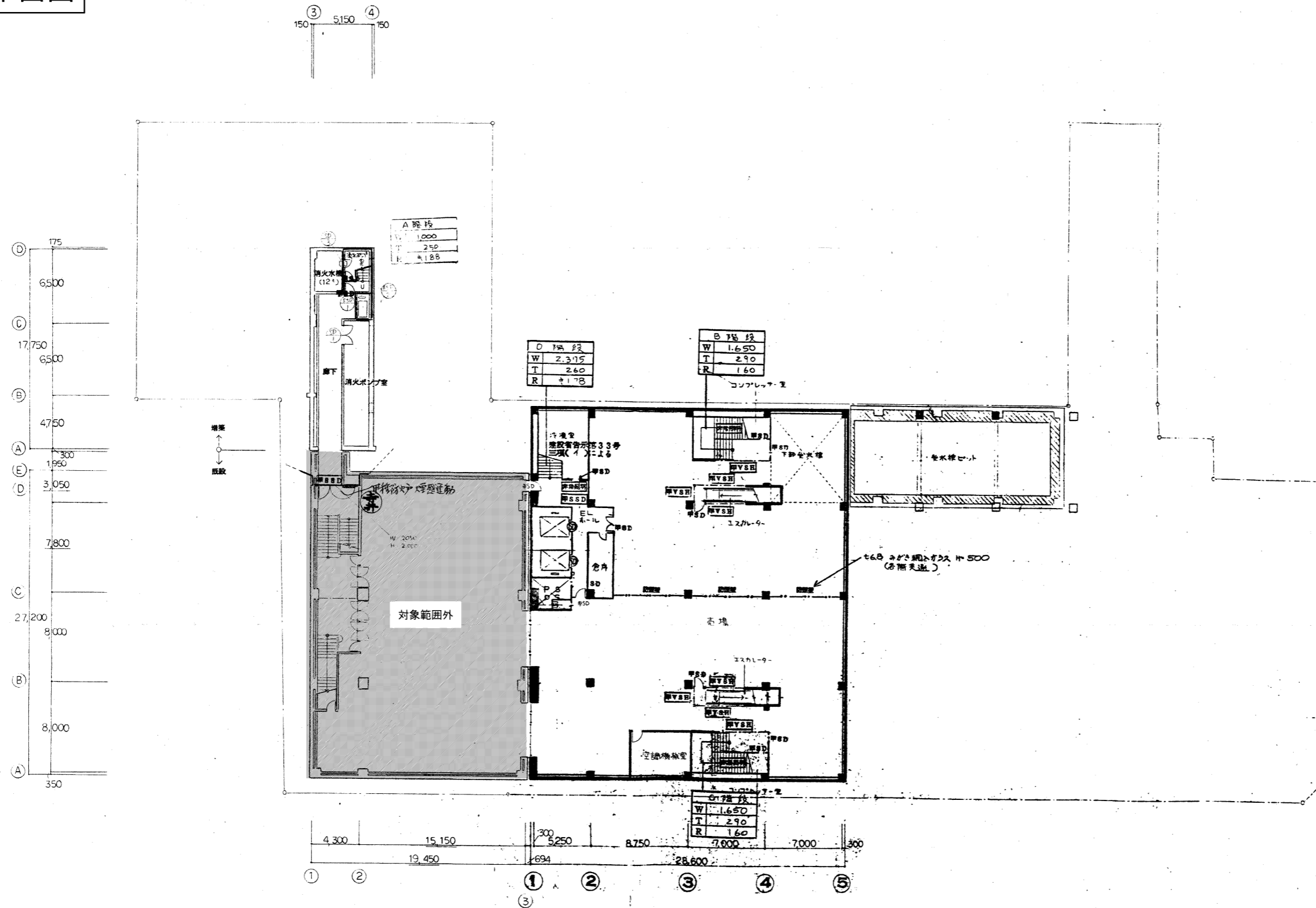
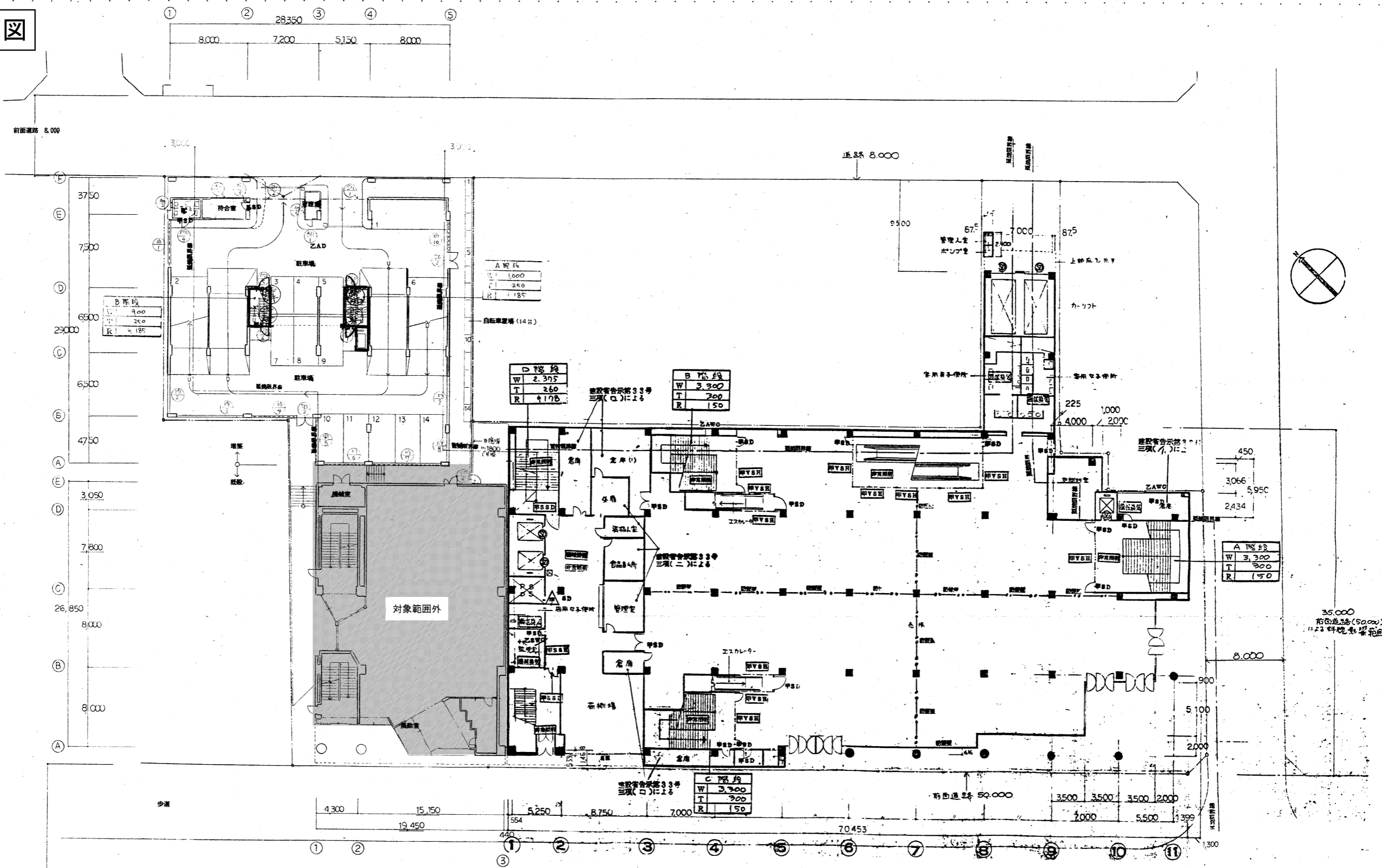


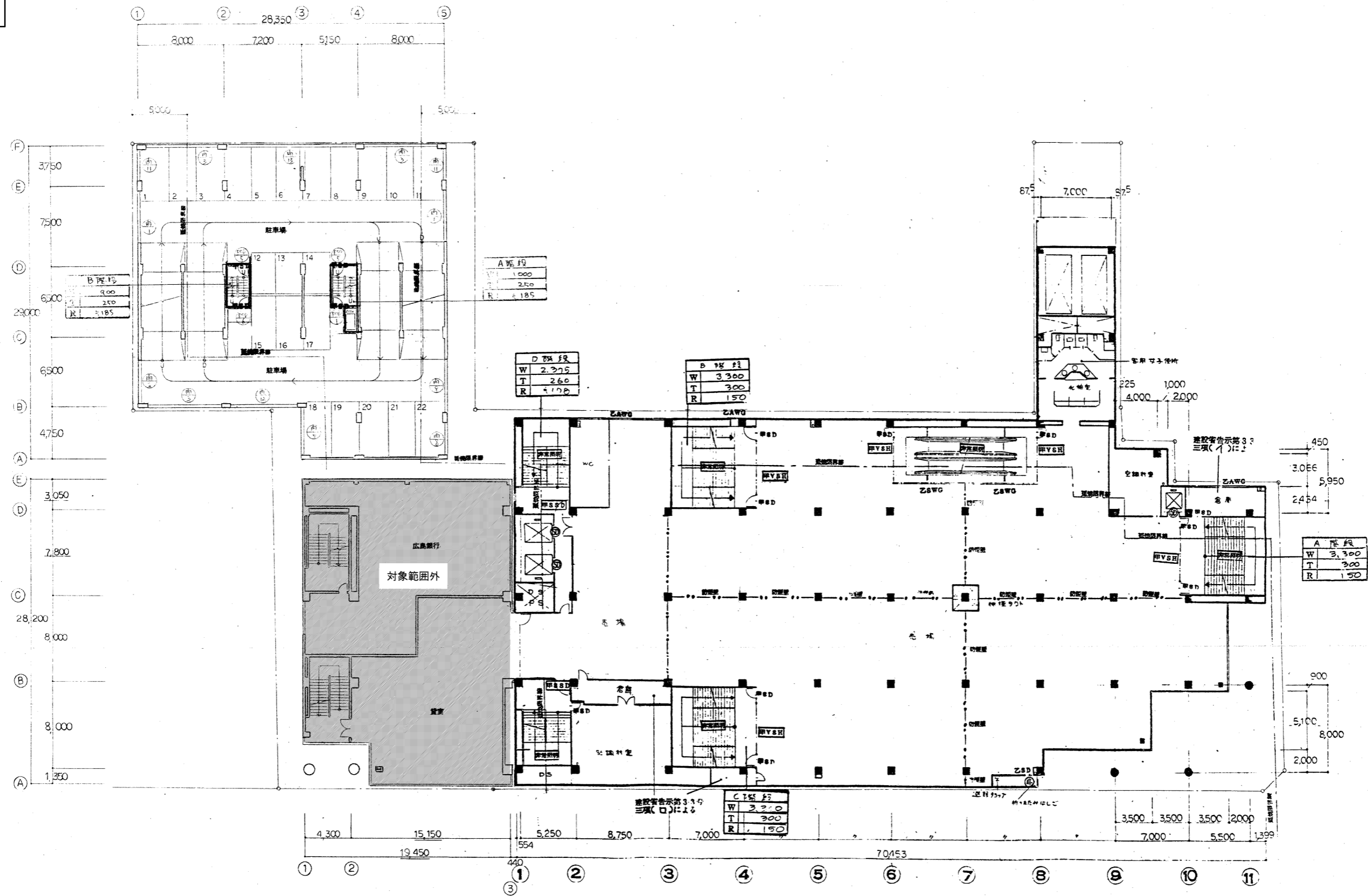
地下1階平面図



1階平面図



2階平面図

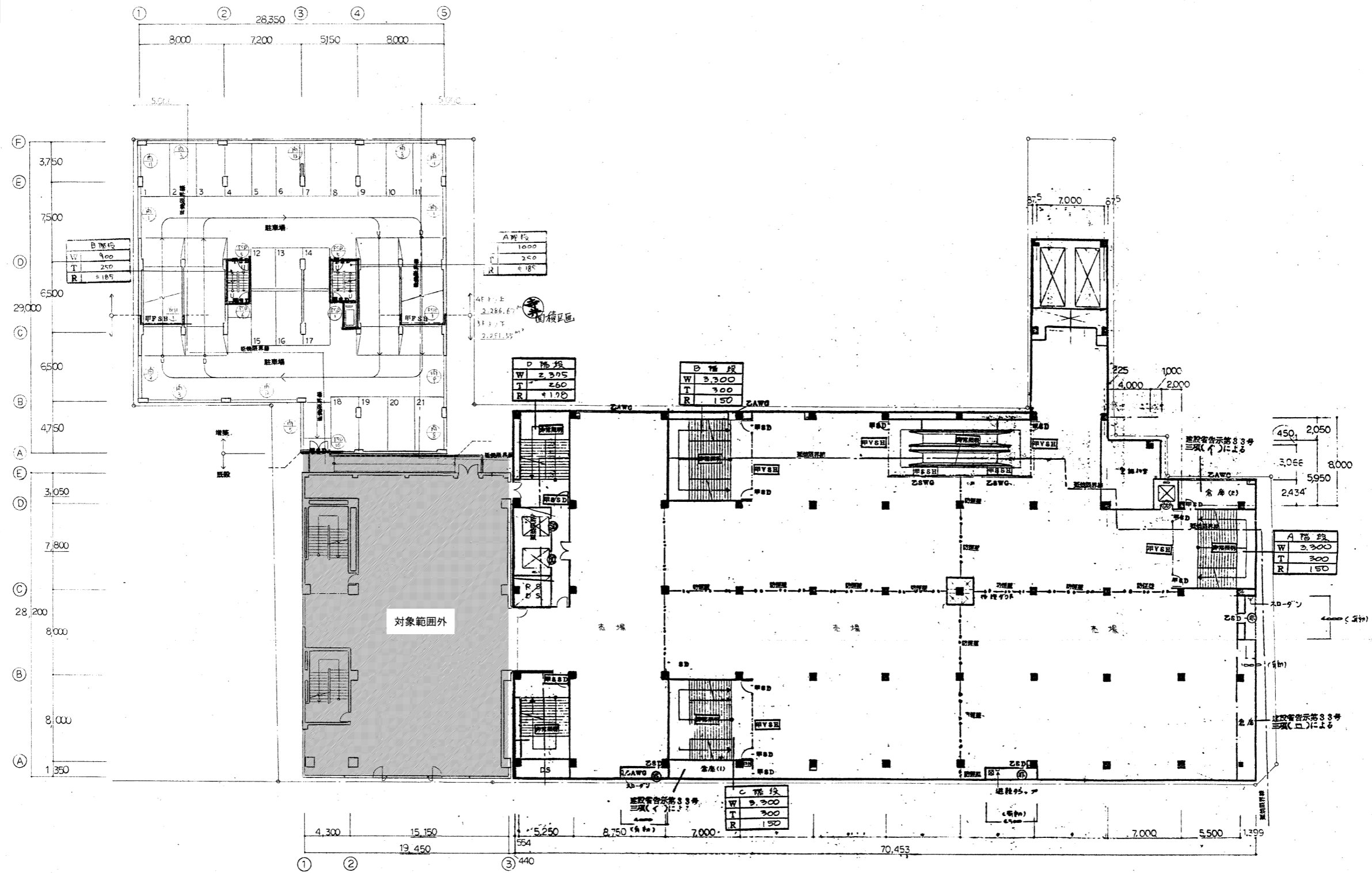


(A1 1:200)



No.3

3階平面図

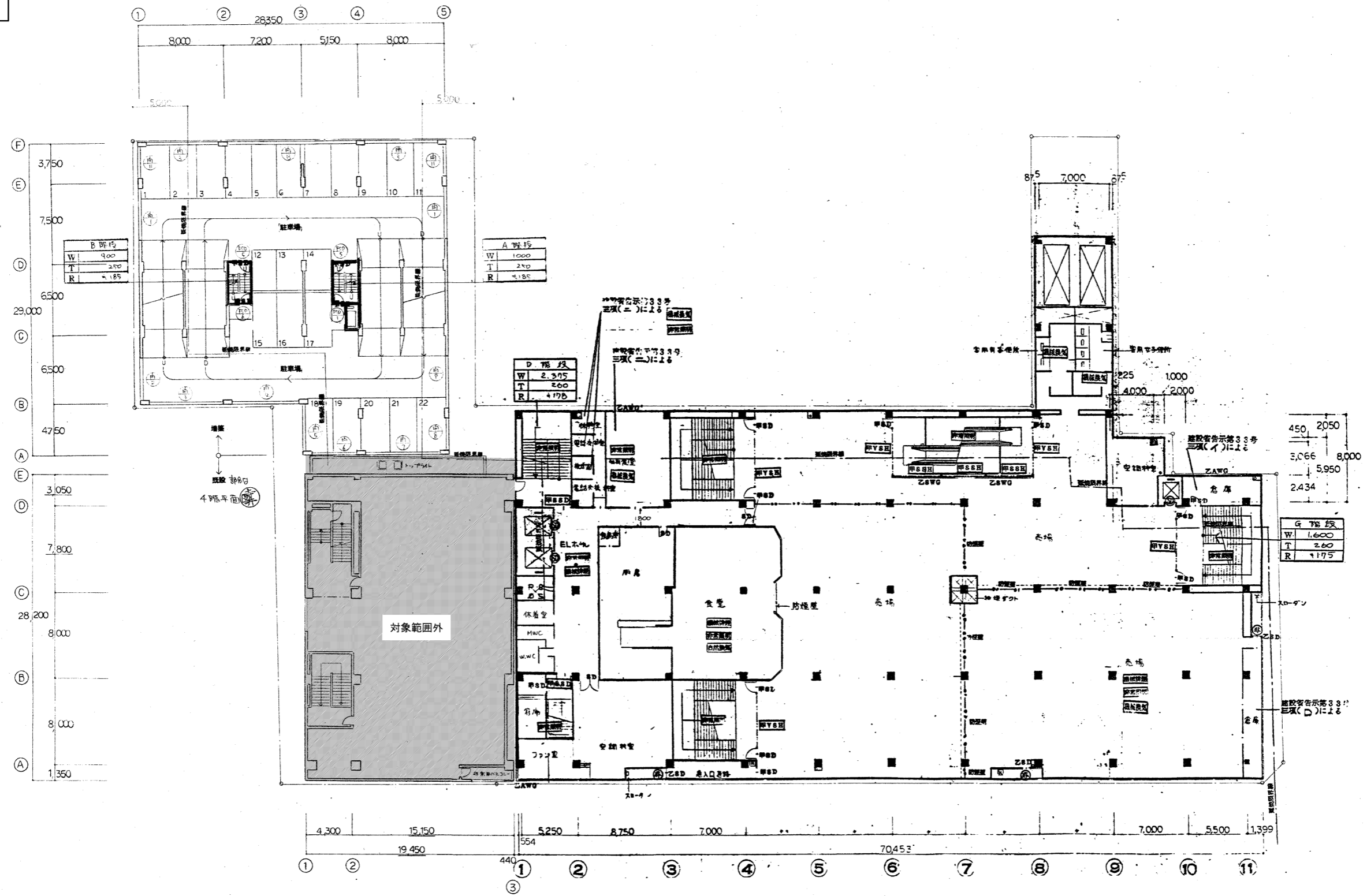


(A1 1:200)



No.4

4階平面図

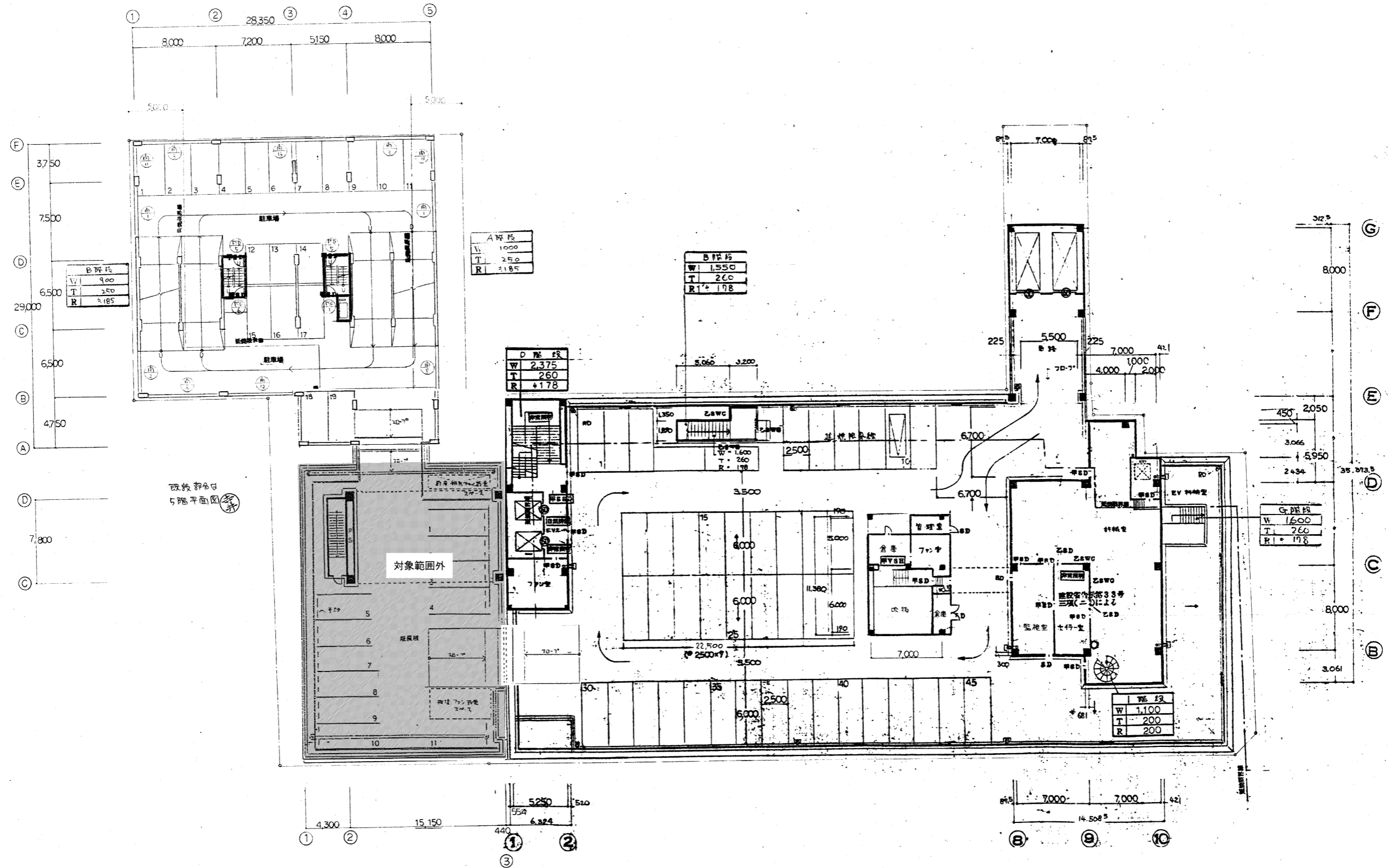


(A1 1:200)



No.5

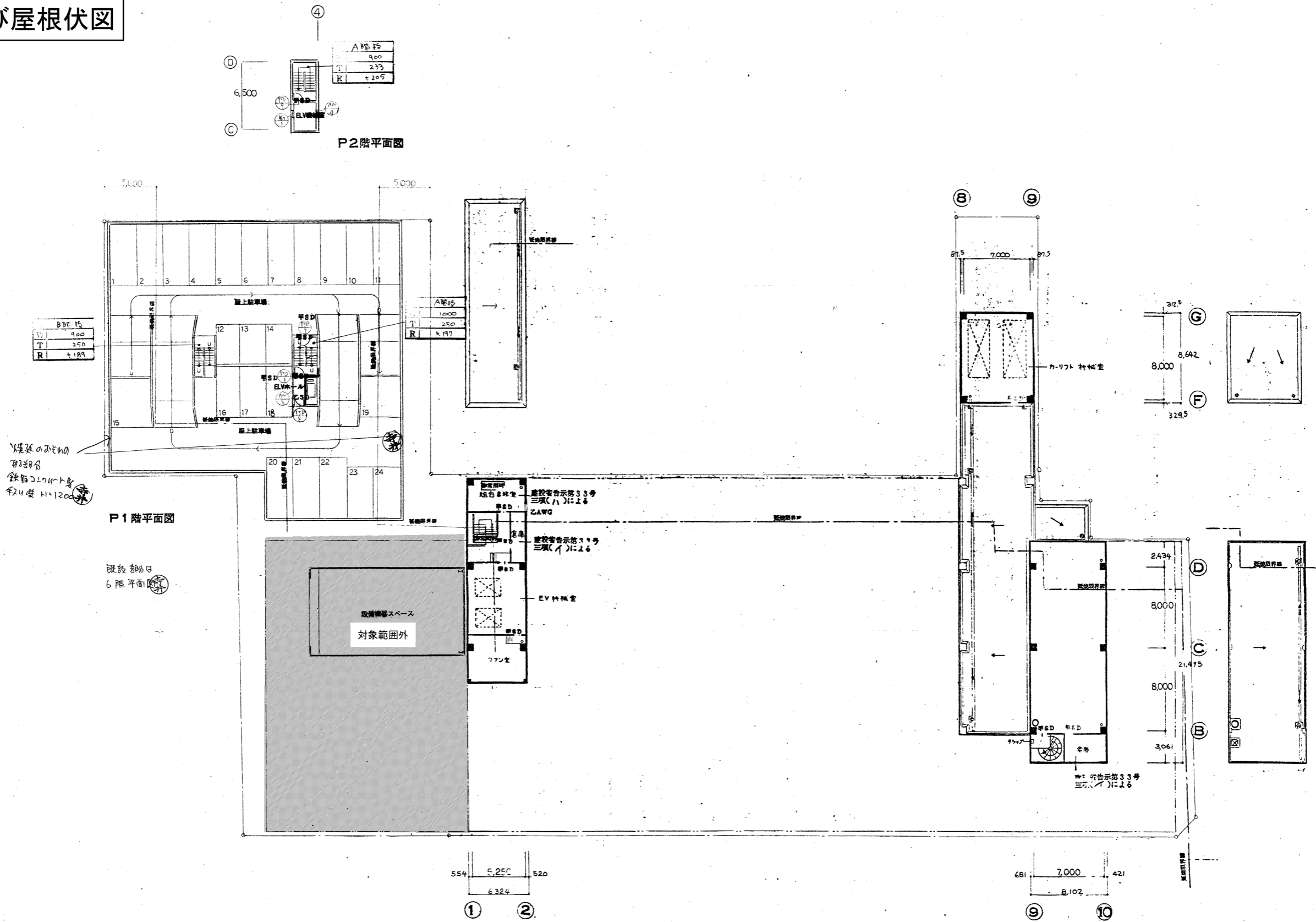
5階平面図



(A1 1:200)



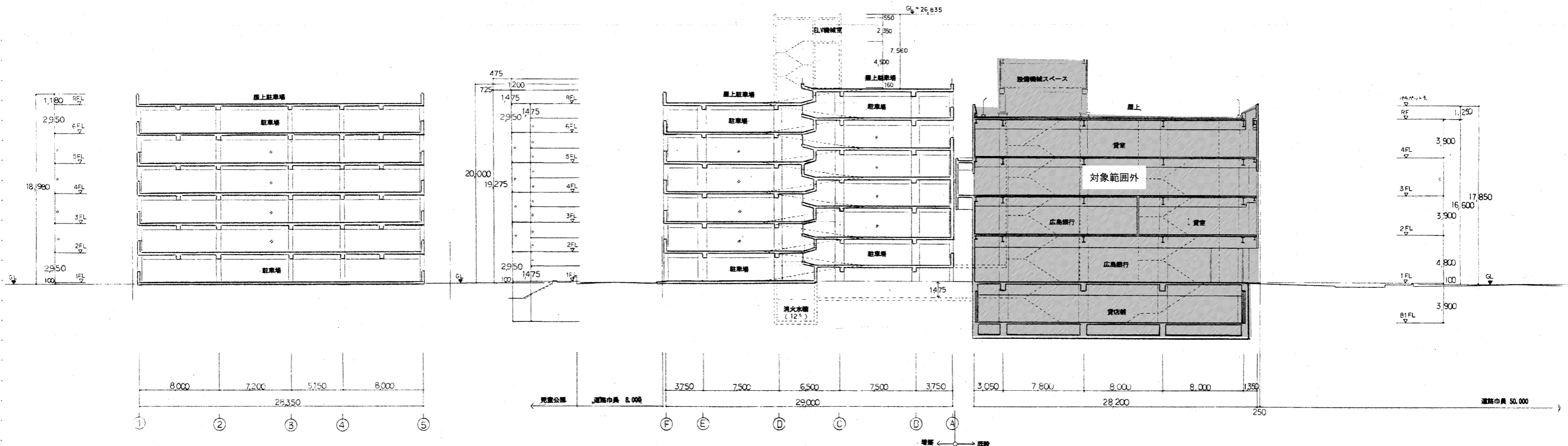
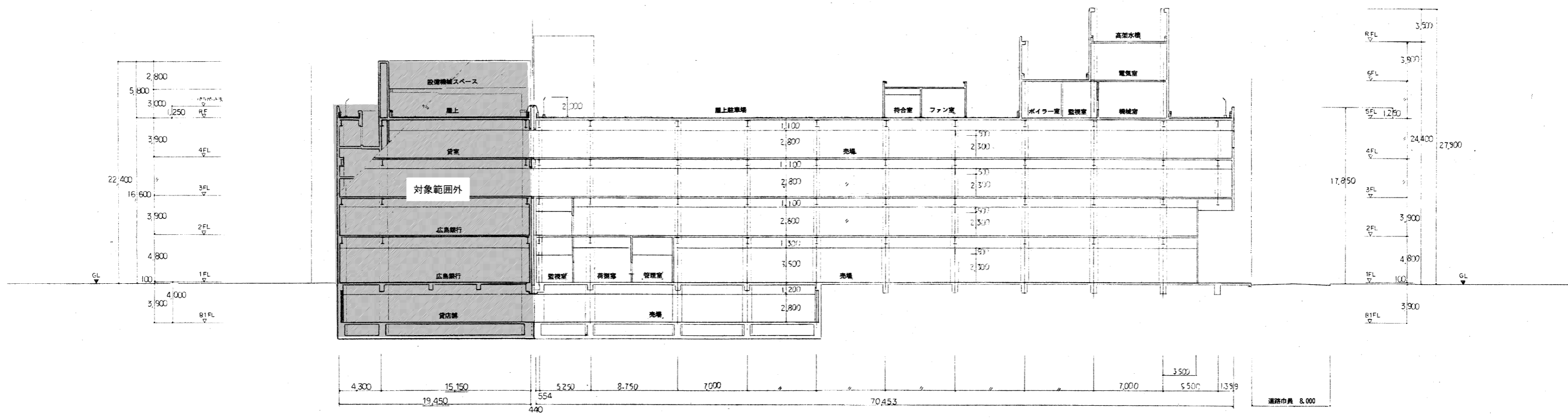
6階平面図及び屋根伏図



(A1 1:200)



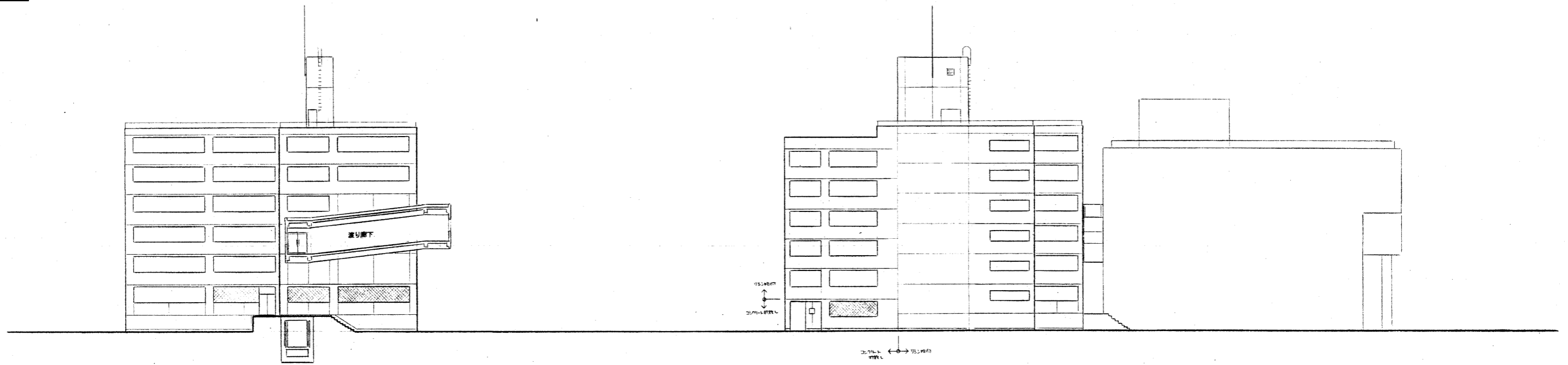
断面図



(A1 1:200)

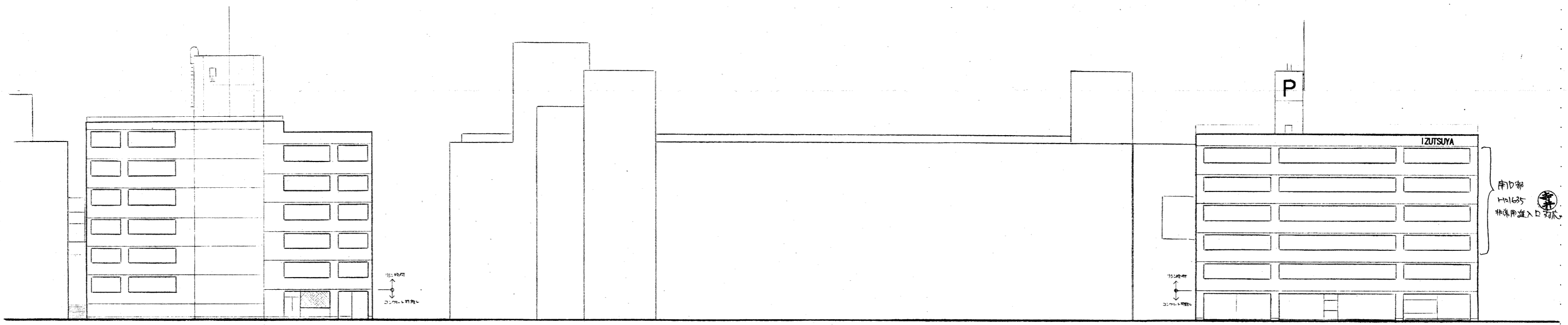
No.8

立面图



南立面图

西立面图



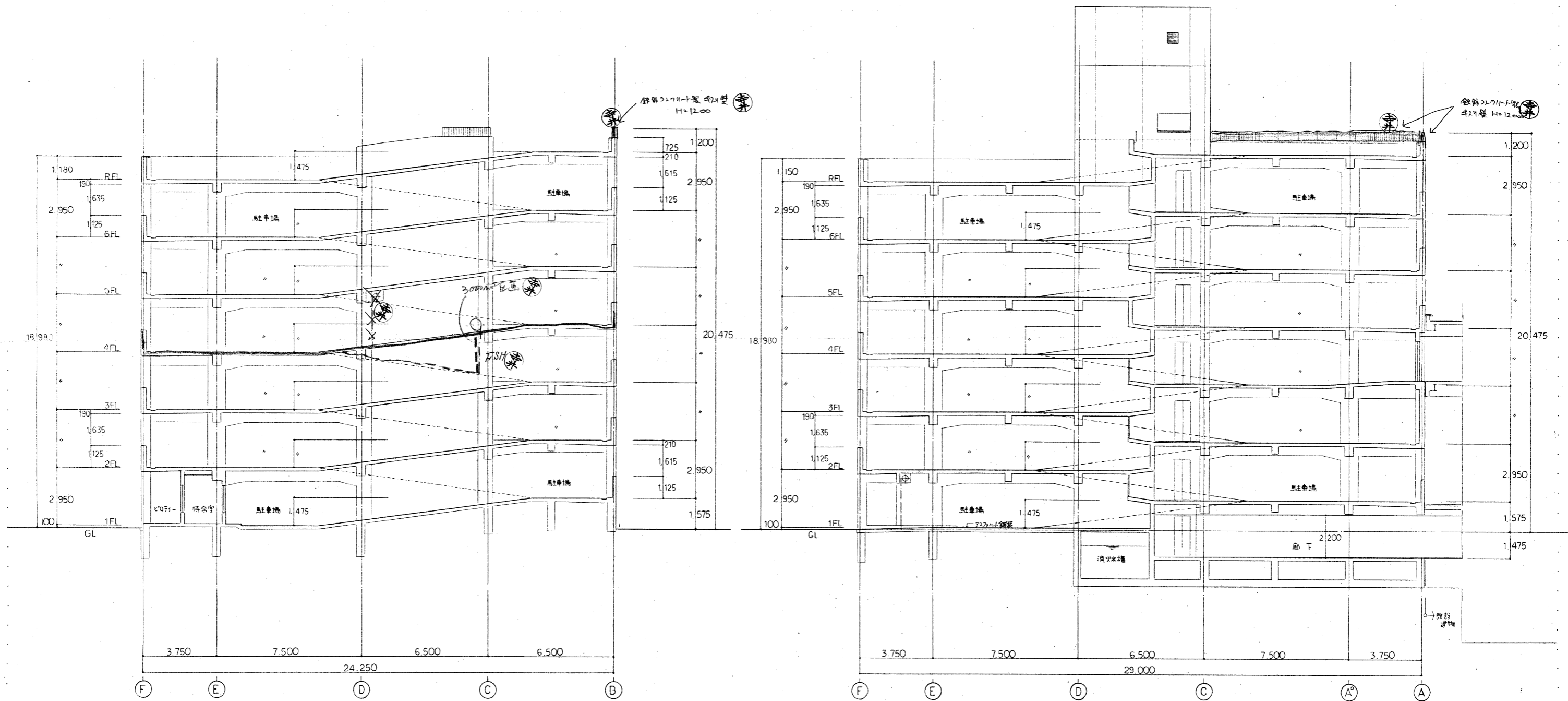
東立面图

北立面图

(A1 1:200)

No.9

駐車場断面図



(A1 1:200)

No.10